

Paving the Way Towards a One-Health Approach for Chemical Risk Assessment



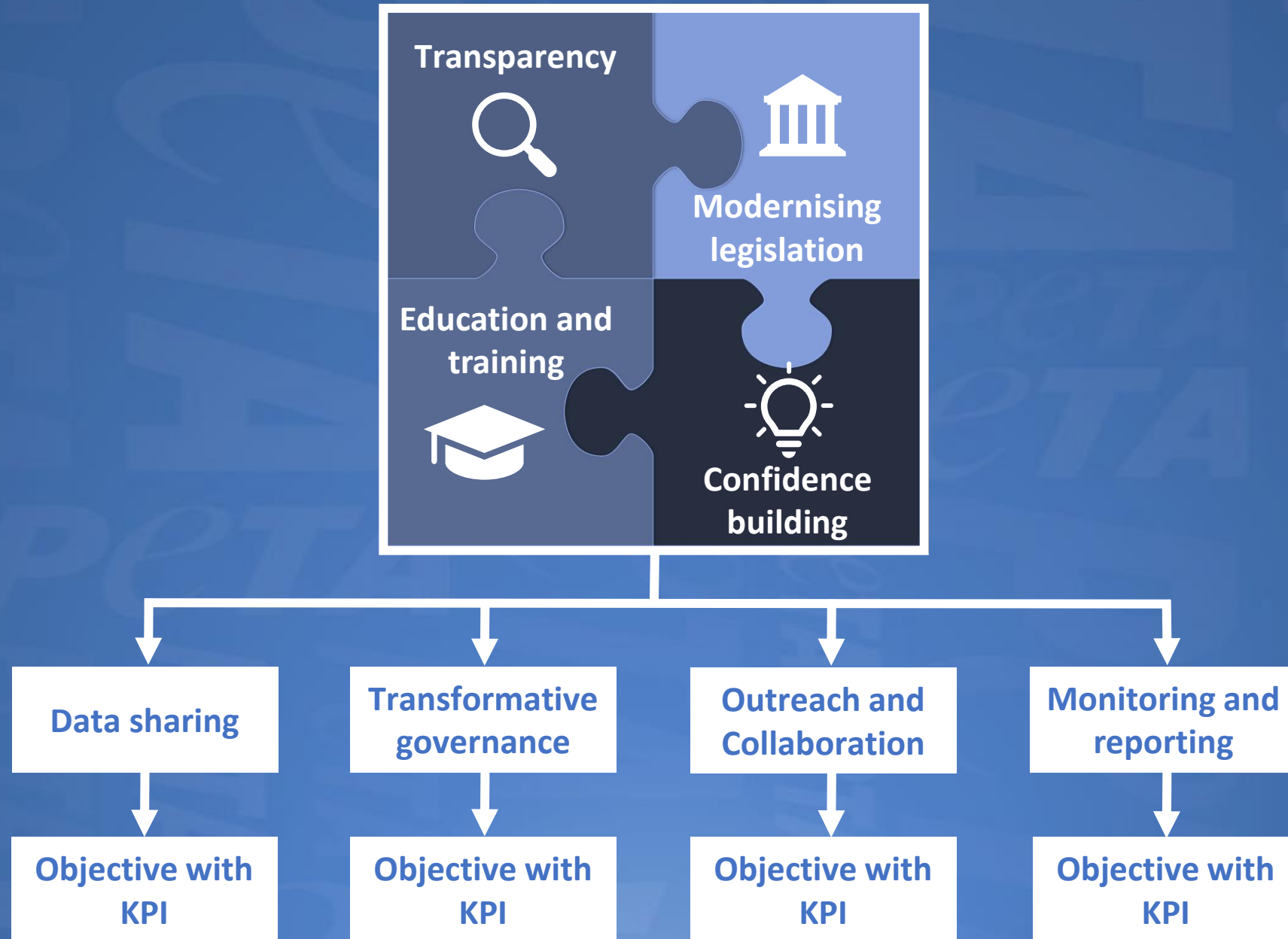
Dr Julia Baines, Senior Science Policy Manager, PETA UK
JuliaB@peta.org.uk

“All you need is the plan, the roadmap, and the courage to press on to your destination.”

- Earl Nightingale



Roadmap template for systemic human-toxicity



Transparency



COMMON DATA PLATFORM ON CHEMICALS



CDPC TO COVER PHARMACEUTICALS



MANDATORY TESTING PROPOSALS FOR ALL ANIMAL STUDIES



DATA SHARING FOR SMEs



IMPROVE VALIDATION AND DECISION MAKING



Modernising
legislation



SYSTEMATIC REVIEWS



REMOVAL OF DEAD-END PATHS



NON-ANIMAL APPROACHES =
DEFAULT REQUIREMENTS



AVOID REPEATING MISTAKES



PHARMACEUTICALS: REVIEW OF
THE ANNEXES



Education and training



ETPLAS EU-52 SEARCHING FOR NON-ANIMAL METHODS



TRAINING FOR REGULATORS



REGISTRATION TRAINING REQUIREMENTS FOR TOXICOLOGISTS



TRAIN THE TRAINERS



CAPITALISE ON EXISTING INITIATIVES



FUNDING



Confidence building



INVESTIGATE BARRIERS TO REMOVING REDUNDANT TESTS



ESTABLISH SAFE SPACES FOR DISCUSSION



RETROSPECTIVE REVIEWS



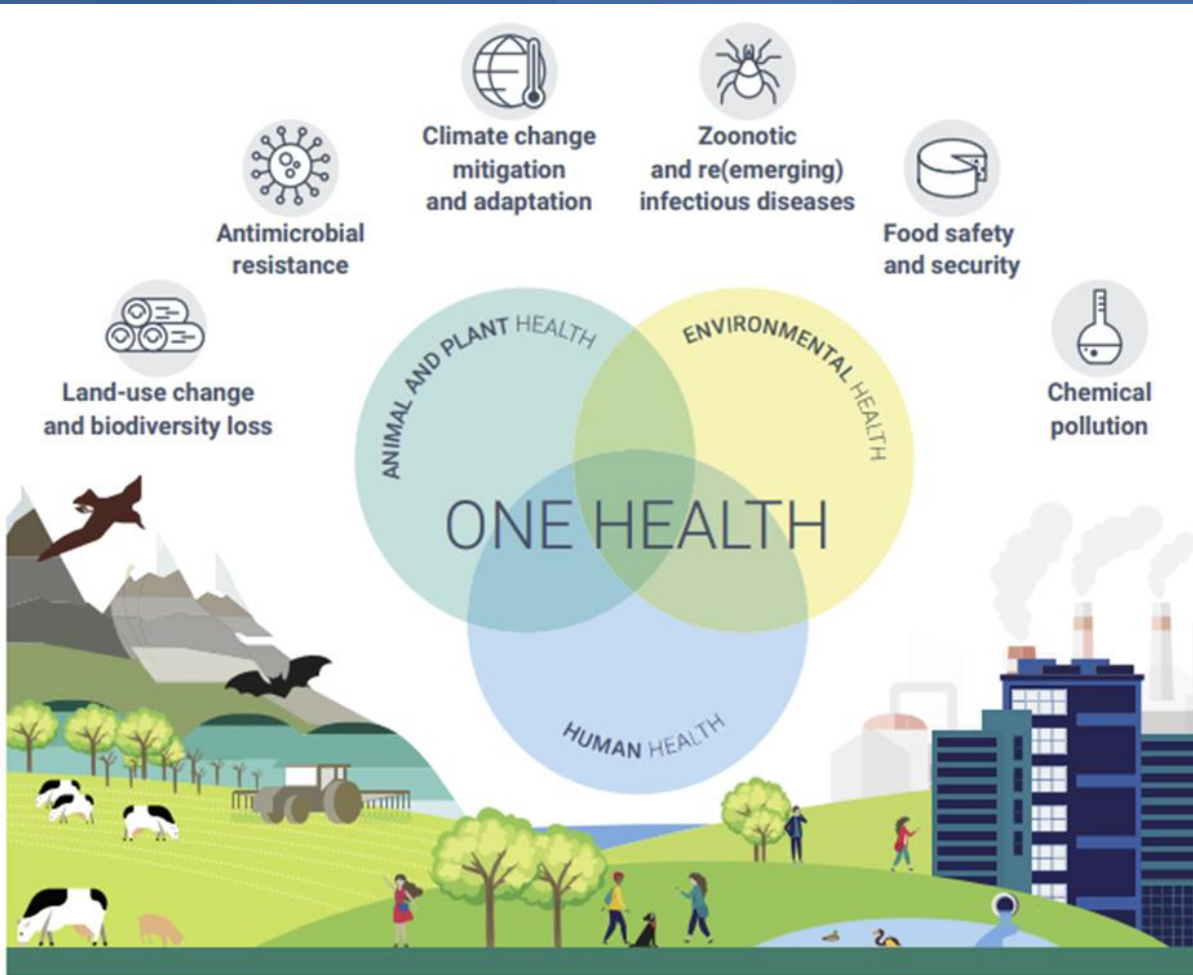
LEVERAGE EXISTING RESOURCES



CROSS-AGENCY TASKFORCE



Cross-agency task force on One Health



1. Strengthening scientific evidence base through filling in knowledge gaps
2. Mainstream One Health in regulatory science
3. Establish intersectoral One Health coordination mechanisms
4. One Health educational and training programmes

“Don't let the fear of the time it will take to accomplish something stand in the way of your doing it. The time will pass anyway; we might just as well put that passing time to the best possible use. Success is the progressive realization of a worthy goal or ideal.”

- Earl Nightingale

